



ENTRE NOUS

ARTWORK BY

NICOLE FARHI & JANE AND LOUISE WILSON

26TH MAY - 15TH JUNE 2023

PRIVATE VIEW THURSDAY 25TH MAY 5:30PM

CCA GALLERIES INTERNATIONAL, 10 HILL STREET, ST HELIER, JERSEY, JE2 4UA



CCA GALLERIES International

CCA Galleries International has shown works of art by both locally and internationally renowned artists. Established in 2013 and ceremonially opened by Sir Peter Blake, the gallery is known for bringing the best of British contemporary art to Jersey. Spanning over 4 floors, in the former Royal Court Chambers, CCA Galleries International regularly holds events, talks and workshops which run alongside the full programme of exhibitions by some of the most accomplished artists currently practising.

CCA Galleries International presents ENTRE NOUS, or 'Between Us' – an exhibition of new artwork by sculptor and designer Nicole Farhi and Turner Prize nominees Jane and Louise Wilson. The exhibition sees all three artists return to Jersey to exhibit after they previously each sat on the panel of judges at the Jersey Summer exhibition 2022.

Sales:

enquiries@ccagalleriesinternational.com

01534 739900

www.ccagalleriesinternational.com



NICOLE FARHI

Nicole Farhi first gained public recognition in the 1980's as a fashion designer. She created her eponymous label in 1982 and went on to win the British Fashion Award for Best Contemporary Designer 3 years running.

Now Farhi is arguably better known for her highly sought after and intrinsically unique sculptural works. Through Farhi's work it is clear that the artist has taken elements from her high fashion design practice. Her understanding of the female form and its fluidity come through strongly in her works, even fixed in bronze these inanimate

objects have a sense of life running through them allowing the viewer to see them as living forms which create a dialogue between the inanimate and the animate.

The sculptor, Jean Gibson, taught Farhi during the early 1980s.

However, it was Eduardo Paolozzi who triggered her full-scale pursuit of sculpture. They met during the mid-1980's at the Royal College of Art's foundry on Queen's Gate where Farhi had gone to cast her first bronze. Paolozzi became her friend and mentor. 'He came for dinner almost once a week. He would invariably arrive loaded with plaster casts – little animals from his 'Noah's Ark,' plaster heads of famous inventors.'

Here, Nicole Farhi presents two new series of sculpture:

Womankind

"I worked with two women; their bodies and their hands, to create this new work. I deliberately decide to concentrate on fragments of the female body — like looking through the lens of a camera at exactly the point of impact. The aim of the sculptures is to express love, empathy, kindness, sensuality".

Shapeshifting

"Everything is two-faced. The figurative face and the abstract face represent our two sides: the one we show the world and the one we hide. The abstract side is often more interesting than the open one. I choose to show that side in a beautifully polished golden bronze while the other side has a dark patina."



RECONFORT
by NICOLE FARHI
Jesmonite sculpture from the series *Womankind* 2021
Original
52 x 56 x 18 cm



JEUX DE JAMBES

by NICOLE FARHI

Jesmonite sculpture from the series *Womankind* 2021

Original

36 x 60 x 46 cm



JEUX DE MAINS
by NICOLE FARHI
Jesmonite sculpture
from the series
Womankind 2021
1 of 6
96 x 45 x 38 cm



LA MUSE ENDORMIE

by NICOLE FARHI

Jesmonite sculpture from the series *Womankind* 2021

2 of 6

30 x 77 x 20 cm



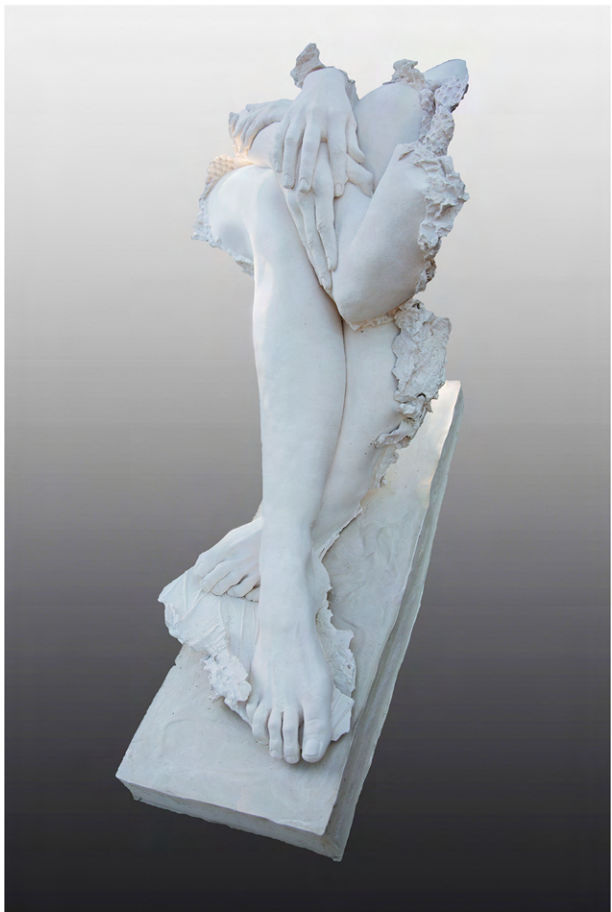
L'UNION

by NICOLE FARHI

Jesmonite sculpture from the series *Womankind* 2021

1 of 6

46 x 47 x 36 cm



ENTRELACE
by NICOLE FARHI
Jesmonite sculpture
from the series
Womankind 2021
2 of 6
90 x 55 x 70 cm



LA TENDRESSE
by NICOLE FARHI
Jesmonite sculpture from the series *Womankind* 2021
3 of 6
41 x 60 x 16 cm



L'ETREINTE

by NICOLE FARHI

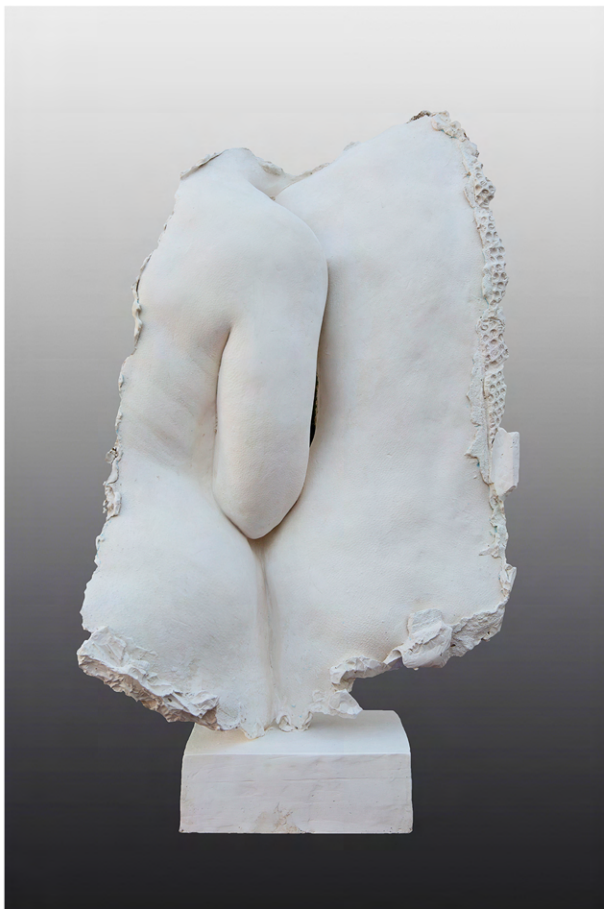
Jesmonite sculpture from the series *Womankind* 2021

1 of 6

44 x 78 x 23 cm



ENTRE NOUS
by NICOLE FARHI
Jesmonite sculpture
from the series
Womankind 2021
1 of 6
80 x 47 x 34 cm



LA DOUCEUR
by NICOLE FARHI
Jesmonite sculpture
from the series
Womankind 2021
1 of 6
72 x 43 x 10 cm



LE BAISER
by NICOLE FARHI
Jesmonite sculpture
from the series
Womankind 2021
1 of 6
80 x 46 x 19 cm



HARMONIE
by NICOLE FARHI
Herculite sculpture from the series *Womankind* 2021
Original
45 x 79 x 23 cm



REVERSO I

by NICOLE FARHI

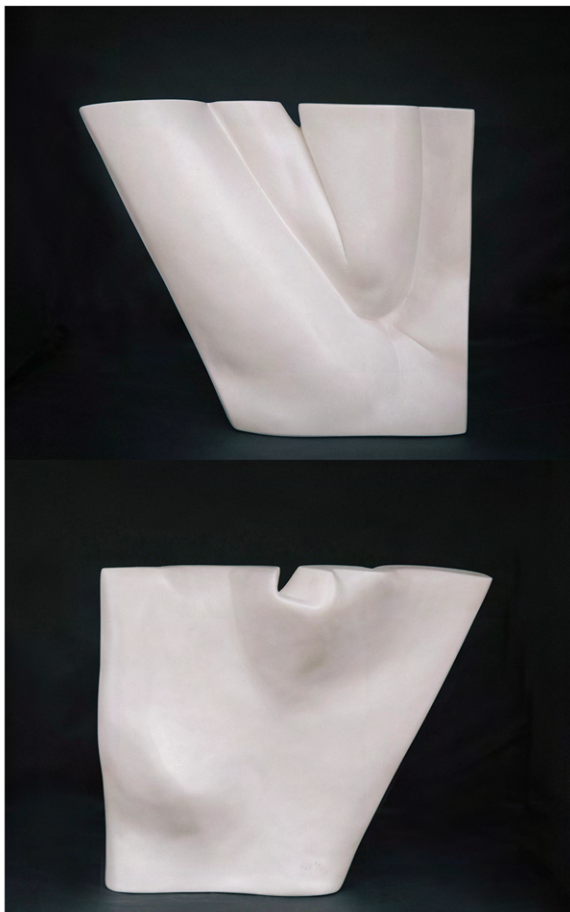
Waxed herculite sculpture from the series *Shapeshifting*, 2021

4 of 6

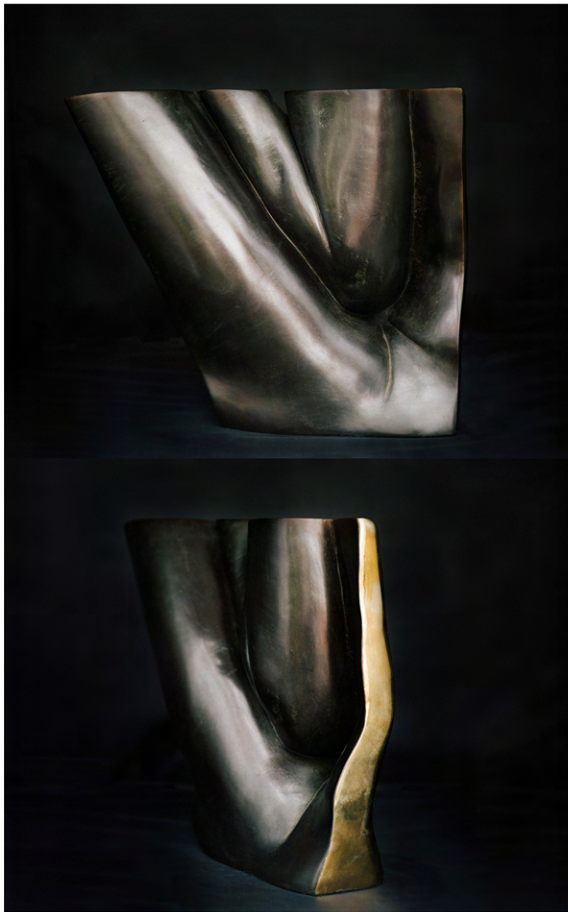
31 x 33 cm



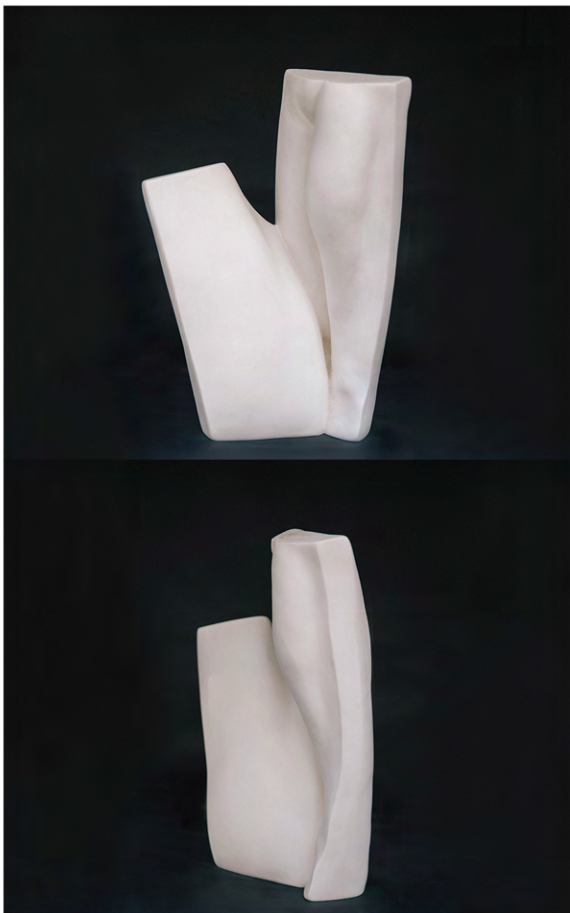
REVERSO II
by NICOLE FARHI
Polished bronze sculpture
from the series
Shapeshifting, 2021
1 of 3
31 x 33 cm



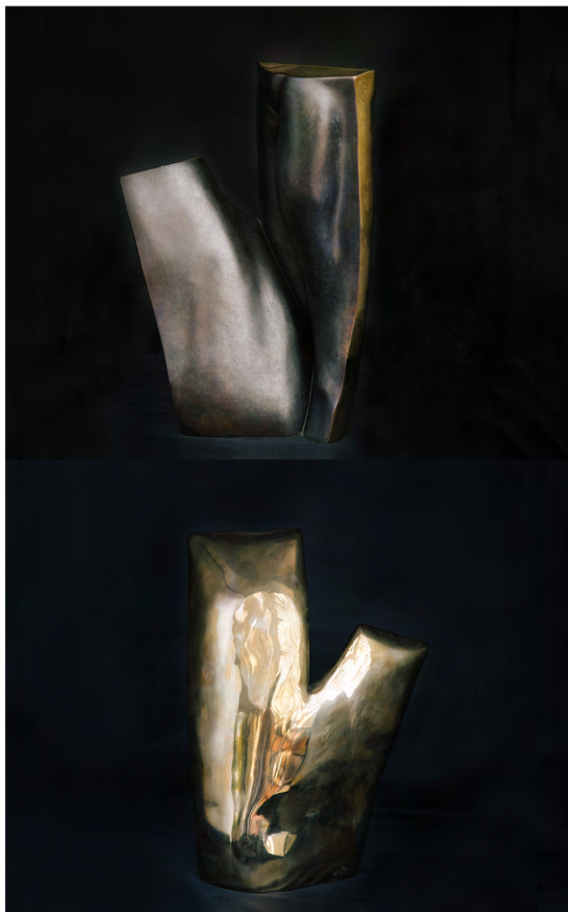
PILE OU FACE I
by NICOLE FARHI
Waxed Herculite
sculpture from the series
Shapeshifting, 2021
1 of 3
27 x 30 cm



PILE OU FACE II
by NICOLE FARHI
Two-sided bronze
sculpture from the series
Shapeshifting, with one
side in high polish and
one side dark patina,
2021
1 of 3
27 x 30 cm



VICE VERSA I
by NICOLE FARHI
Waxed herculite sculpture
from the series
Shapeshifting, 2021
1 of 6
34 x 24 cm



VICE VERSA II
by NICOLE FARHI
Two-sided bronze
sculpture from the series
Shapeshifting, with one
side in high polish and
one side dark patina,
2021
1 of 3
34 x 24 cm



VIREVOLTE I
by NICOLE FARHI
Waxed herculite sculpture
from the series
Shapeshifting, 2022
1 of 6
26 x 27 x 43 cm

Available in two-sided bronze
finish in an edition of 3



VOLTEFACE I
by NICOLE FARHI
Waxed herculite sculpture
from the series
Shapeshifting, 2022
1 of 6
43 x 23 cm

Available in two-sided bronze
finish in an edition of 3



Sales:

enquiries@ccagalleriesinternational.com

01534 739900

www.ccagalleriesinternational.com

CCA GALLERIES INTERNATIONAL, 10 HILL STREET, ST HELIER, JERSEY, JE2 4UA

CCA GALLERIES International